

# Knowsley PCT - Adults with Learning Disabilities

---


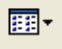
## Introduction

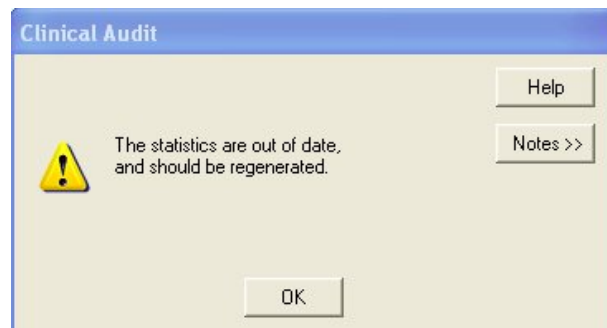
This audit is a health needs assessment for patients over 18 years with learning disabilities.

<b>KNOWSLEY PCT - ADULTS WITH LEARNING DISABILITIES</b>	<b>1</b>
Introduction	1
Downloading, importing and running the audit	2
Audit Criteria	4
Age Breakdown	4
Ethnic Status	5
LD and Breast Screening	6
LD and Cervical Screening	7
LD and Chronic Disease	8
LD and Examination	10
LD and Health Assessment in the last 15 months	11
LD and Hearing	12
LD and Lifestyle	12
LD and Referrals	16
LD and Referrals in the last 15 months	17
LD and Swallowing Difficulty	17
LD and Vision	18
LD Diagnosis	18
LD Offered Health Education	19
Severity of LD	20



---

## Downloading, importing and running the audit

1. Go to the InPS website [www.inps.co.uk](http://www.inps.co.uk) then to Client Zone - Downloads - Clinical Audit.
2. Select the audit category you want - Knowsley PCT - and click once to expand it.
3. Click on  and select Open.
4. At the Winzip Self-Extractor screen, click on Unzip. The files are in self-extracting compressed zip format in order to save you downloading time. They are unzipped to O:\DOWNLOAD\audits.
5. In Vision - Clinical Audit, select File - Maintenance Mode.
6. Click on Import Searches from the Searches Menu and navigate to O:\DOWNLOAD\audit.
7. At the Import Searches screen, click on , swap to Details, then click on the Date Modified column header (you may need to do this twice) until the most recent date is at the top.
8. Click on the audit you want - Adults with Learning Disabilities - click on Open and follow the prompts.
9. The next screen confirms the audit you are importing. Check it is the correct audit, and click on Yes.
10. Click OK when you see the message: The statistics are out of date and should be regenerated.



If there are any inactivate reminders:

11. Point to a line where the reminder icon is pale yellow , and click with the right mouse, selecting Reminder. Check the Active box on the Reminder screen. Click on OK. The icon will now become bold yellow .

Finally, you need to generate the new audit:

12. You will find that once audits have been imported, the Generate tab will again show in red, signifying that you can regenerate the monthly statistics.

13. Click on the Generate tab then on the Generate button (Continue generation for [month/year]). It will only run the newly imported audit, unless it is the end of the month and Generate is already triggered.

## Knowsley PCT

### Adults With Learning Disabilities

- Age Breakdown (Version 1, 21/11/2008)
- Ethnic Status (Version 1, 21/11/2008)
- LD and Breast Screening (Version 1, 21/11/2008)
- LD and Cervical Screening (Version 1, 21/11/2008)
- LD and Chronic Disease (Version 1, 21/11/2008)
- LD and Examination (Version 1, 21/11/2008)
- LD and Health Assessment in the Last 15 Months (Version 1, 21/11/2008)
- LD and Hearing (Version 1, 21/11/2008)
- LD and Lifestyle (Version 1, 21/11/2008)
- LD and Referrals (Version 1, 21/11/2008)
- LD and Referrals in the Last 15 Months (Version 1, 21/11/2008)
- LD and Swallowing Difficulty (Version 1, 21/11/2008)
- LD and Vision (Version 1, 21/11/2008)
- LD Diagnosis (Version 1, 21/11/2008)
- LD Offered Health Education (Version 1, 21/11/2008)
- Severity of LD (Version 1, 21/11/2008)

---

## **Audit Criteria**

v1, 21/11/2008

### **Age Breakdown**

Total Practice population

All active, registered patients (permanent and applied)

Patients aged 18 years and over

Adults (18+) on Learning Disabilities Register

With one of the following Read codes:

918e. On learning disability register

Eu81z [X]Developmental disorder of scholastic skills, unspecified

E3% Mental retardation

Eu7% [X]Mental retardation

Adults (18+) on Learning Disabilities Register aged 18-24

Adults (18+) on Learning Disabilities Register aged 25-34

Adults (18+) on Learning Disabilities Register aged 35-44

Adults (18+) on Learning Disabilities Register aged 45-54

Adults (18+) on Learning Disabilities Register aged 55-64

Adults (18+) on Learning Disabilities Register aged 65-74

Adults (18+) on Learning Disabilities Register aged 75+

## **Ethnic Status**

Adults (18+) on Learning Disabilities Register

With one of the following Read codes:

918e. On learning disability register

Eu81z [X]Developmental disorder of scholastic skills, unspecified

E3% Mental retardation

Eu7% [X]Mental retardation

With one of the following Read codes:

Patients with LD (18+) - White origin

9S1.. White

Patients with LD (18+) - Black Caribbean

9S2.. Black Caribbean

Patients with LD (18+) - Black African

9S3.. Black African

Patients with LD (18+) - Black, other, non mixed origin

9S4% Black, other, non-mixed origin

Patients with LD (18+) - Black, other, mixed

9S5% Black - other, mixed

Patients with LD (18+) - Indian

9S6.. Indian

Patients with LD (18+) - Pakistani

9S7.. Pakistani

Patients with LD (18+) - Bangladeshi

9S8.. Bangladeshi

Patients with LD (18+) - Chinese

9S9.. Chinese

Patients with LD (18+) - Other Ethnic, non-mixed

9SA% Other ethnic non-mixed (NMO)

Patients with LD (18+) - Other Ethnic, mixed origin

9SB% Other ethnic, mixed origin

Patients with LD (18+) - Vietnamese

9SC.. Vietnamese

Patients with LD (18+) - Ethnic group not given – patient refused

9SD.. Ethnic group not given - patient refused

Patients with LD (18+) - Ethnic group not recorded

9SE.. Ethnic group not recorded

Patients with LD (18+) - Other Black Ethnic group

9SG.. Other black ethnic group

Patients with LD (18+) - Other Asian Ethnic Group

9SH.. Other Asian ethnic group

Patients with LD (18+) - Irish Traveller

9Si.. Irish Traveller

Patients with LD (18+) - Other ethnic group

9SJ.. Other ethnic group

Patients with LD (18+) – Ethnic groups (census) NOS

9SZ.. Ethnic groups (census) NOS

## **LD and Breast Screening**

Adults (18+) on Learning Disabilities Register

With one of the following Read codes:

918e. On learning disability register

Eu81z [X]Developmental disorder of scholastic skills, unspecified

E3% Mental retardation

Eu7% [X]Mental retardation

Women aged 50-70 on Learning disabilities register (eligible for breast screening)

Women aged 50-70 on Learning disabilities register NOT received breast screening ever

With NO record of the following breast screening Read codes:

6862% Breast neoplasm screen

6865. Breast neoplasm screen normal

Women aged 50-70 on Learning disabilities register received breast screening ever

Women aged 50-70 on Learning disabilities register received breast screening in last 3 years

Women aged 50-70 on Learning disabilities register NOT received breast screening in last 3 years

## LD and Cervical Screening

Adults (18+) on Learning Disabilities Register

With one of the following Read codes:

- 918e. On learning disability register
- Eu81z [X]Developmental disorder of scholastic skills, unspecified
- E3% Mental retardation
- Eu7% [X]Mental retardation

Women with LD eligible for Cervical Screening (aged 25-65)

Women with LD (aged 25-65) received cervical screening ever

With one of the following Read codes ever:

- 4K22. Cervical smear: negative
- 4K23. Cerv.smear: mild dyskaryosis
- 4K24. Cerv.smear: severe dyskaryosis
- 4K25. Cerv.smear:severe dysk.?inv.ca
- 4K26. Cervical smear: ? gland neopl
- 4K27. Cervical smear:atrophic change
- 4K28. Cerv.smear: mod.dyskaryosis
- 4K29. Cerv.smear: borderline changes
- 4K2C. Smear NAD - no endocervical cells
- 4KA1. Vaginal vault smear negative
- 4KA3. Vaginal vault smear-atrophic
- 4KA4. Vaginal vault smear abnormal
- 6856. Ca cervix screen - up to date
- 6859. Ca cervix - screen done
- 685B. Ca cervix screen normal
- 685C. Ca cervix screen abnormal
- 685D. Ca cervix screen + fee claim
- 685R. Liquid based cervical cytology screening
- 7E2A2 Papanicolau smear NEC
- 7E2A3 Vaginal vault smear
- ZV762 [V] Screening for malignant neoplasm of cervix
- 7E2A0 Exam female genital tract under anaesth papanicolau smear

Women with LD (aged 25-65) NOT received cervical screening ever

Women with LD (aged 25-65) received cervical screening in the last 3 years

Women with LD (aged 25-65) NOT received cervical screening in the last 3 years

Women with LD (aged 25-65) NOT received cervical screening in the last 3 years and have refused screening in the last 3 years

With one of the following Read codes for refused screening in the last 3 years:

- 6853. Ca cervix screen - not wanted
- 685L. Cervical smear refused
- 8I6K. Cervical smear not indicated
- 9O8Q. Cerv smear disclaimer received
- 9O8S Cervical smear defaulter

## **LD and Chronic Disease**

Adults (18+) on Learning Disabilities Register

With one of the following Read codes:

- 918e. On learning disability register
- Eu81z [X]Developmental disorder of scholastic skills, unspecified
- E3% Mental retardation
- Eu7% [X]Mental retardation

With one or more of the following Read codes:

Patients with LD (18+) and Hypertensive disease

- G2% Hypertensive disease

Patients with LD (18+) and Ischaemic Heart Disease

- G3% Ischaemic heart disease
- Gyu3.% [X]Ischaemic heart disease

Patients with LD (18+) and Stroke / CVA

- G66% Stroke and cerebrovascular accident unspecified

Patients with LD (18+) and Type 1 Diabetes

- C10E% Type 1 diabetes mellitus

Patients with LD (18+) and Type 2 Diabetes

- C10F% type 2 diabetes mellitus

Patients with LD (18+) and Hypothyroidism

C03% Congenital hypothyroidism

C04% Acquired hypothyroidism

Patients with LD (18+) and Epilepsy

F25% Epilepsy

Patients with LD (18+) and Mental Health Problems

E10..% Schizophrenic disorders

E110.% Manic disorder, single episode

E111.% Recurrent manic episodes

E1124 Single major depressive episode, severe, with psychosis

E1134 Recurrent major depressive episode, severe, with psychosis

E114% Bipolar affective disorder, currently manic

E115% Bipolar affective disorder, currently depressed

E116% Mixed bipolar affective disorder

E117% Unspecified bipolar affective disorder

E11y.% Other and unspecified manic-depressive psychoses

E11z. Other and unspecified affective psychoses

E11z0 Unspecified affective psychoses NOS

E11zz Other affective psychosis NOS

E12..% Paranoid states

E13..% Other nonorganic psychoses

Euz..% [X]Mental disorder, not otherwise specified

Eu30. [X]Manic episode

Eu31. Bipolar affective disorder

Patients with LD (18+) and COPD

H3... Chronic obstructive pulmonary disease

H31..% Chronic bronchitis

H32..% Emphysema

H36.. Mild chronic obstructive pulmonary disease

H37.. Moderate chronic obstructive pulmonary disease

H38.. Severe chronic obstructive pulmonary disease

H39.. Very severe chronic obstructive pulmonary disease

H3y.. Other specified chronic obstructive pulmonary disease

H3z.. Chronic obstructive airways disease NOS

Patients with LD (18+) and Asthma

H33% Asthma

## **LD and Examination**

Adults (18+) on Learning Disabilities Register

With one of the following Read codes:

918e. On learning disability register

Eu81z [X]Developmental disorder of scholastic skills, unspecified

E3% Mental retardation

Eu7% [X]Mental retardation

BP NOT recorded ever

With NO record of one of the following Read codes for BP ever:

246% O/E - blood pressure reading

BP recorded ever

With a record of one of the following Read codes for BP ever:

246% O/E - blood pressure reading

BP recorded in the last 15 months

With a record of one of the following Read codes for BP in the last 15 months:

246% O/E - blood pressure reading

BMI NOT recorded ever

With NO record of a Weight SDA with BMI recorded with one of the following Read codes ever:

22K% Body Mass Index

BMI recorded ever

With a record of a Weight SDA with BMI recorded with one of the following Read codes ever:

22K% Body Mass Index

BMI recorded in last 15 months

With NO record of a Weight SDA with BMI recorded with one of the following Read codes in the last 15 months:

22K% Body Mass Index

BMI recorded in the last 15 months with result < 20

With a record of a Weight SDA with BMI recorded with one of the following Read codes with a result less than 20 in the last 15 months:

22K% Body Mass Index

BMI recorded in the last 15 months with result  $\geq 20$  and < 25

With a record of a Weight SDA with BMI recorded with one of the following Read codes with a result equal to or more than 20 and less than 25 in the last 15 months:

22K% Body Mass Index

BMI recorded in the last 15 months with result  $\geq 25$  and < 30

With a record of a Weight SDA with BMI recorded with one of the following Read codes with a result equal to or more than 25 and less than 30 in the last 15 months:

22K% Body Mass Index

BMI recorded in the last 15 months with result  $\geq 30$

With a record of a Weight SDA with BMI recorded with one of the following Read codes with a result equal to or more than 30 in the last 15 months:

22K% Body Mass Index

BMI recorded in the last 15 months with result  $\geq 40$

With a record of a Weight SDA with BMI recorded with one of the following Read codes with a result equal to or more than 40 in the last 15 months:

22K% Body Mass Index

## **LD and Health Assessment in the last 15 months**

Adults (18+) on Learning Disabilities Register

With one of the following Read codes:

918e. On learning disability register

Eu81z [X]Developmental disorder of scholastic skills, unspecified

E3% Mental retardation

Eu7% [X]Mental retardation

Received a health assessment in the last 15 months

With a record of the following Read code in the last 15 months:

9HB3. Learning disabilities health assessment

NOT received a health assessment in the last 15 months

## **LD and Hearing**

Adults (18+) on Learning Disabilities Register

With one of the following Read codes:

918e. On learning disability register

Eu81z [X]Developmental disorder of scholastic skills, unspecified

E3% Mental retardation

Eu7% [X]Mental retardation

With normal hearing

1C11. Hearing normal

With hearing difficulty

1C12. Hearing difficulty

With deafness

F59..11 Deafness

## **LD and Lifestyle**

Adults (18+) on Learning Disabilities Register

With one of the following Read codes:

918e. On learning disability register

Eu81z [X]Developmental disorder of scholastic skills, unspecified

E3% Mental retardation

Eu7% [X]Mental retardation

Smoking status recorded ever

With one of the following Read codes recorded ever:

137. Tobacco consumption

137.11 Smoker - amount smoked

1371. Never smoked tobacco

1372. Trivial smoker - <1 cig/day

1373. Light smoker - 1-9 cigs/day

1374. Moderate smoker - 10-19 cigs/day

1375. Heavy smoker - 20-39 cigs/day

1376. Very heavy smoker - 40+ cigs/day

137C. Keeps trying to stop smoking  
137D. Admitted tobacco cons untrue?  
137F. Ex-smoker - amount unknown  
137G. Trying to give up smoking  
137H. Pipe smoker  
137J. Cigar smoker  
137K. Stopped smoking  
137L. Current non-smoker  
137M. Rolls own cigarettes  
137N. Ex pipe smoker  
137O. Ex cigar smoker  
137P. Cigarette smoker  
137Q. Smoking started  
137R. Current smoker  
137S. Ex smoker  
137T. Date ceased smoking  
137V. Smoking reduced  
137X. Cigarette consumption  
137Y. Cigar consumption  
137Z. Tobacco consumption NOS  
137a. Pipe tobacco consumption  
137b. Ready to stop smoking  
137c. Thinking about stopping smoking  
137d. Not interested in stopping smoking  
137e. Smoking restarted  
137f. Reason for restarting smoking  
137g. Cigarette pack-years  
137h. Minutes from waking to first tobacco consumption

Smoking status NOT recorded ever

Patients with LD (18+) who currently smoke (smoking status recorded in the last 15 months)

With one of the following Read codes recorded in the last 15 months:

1372. Trivial smoker - <1 cig/day  
1373. Light smoker - 1-9 cigs/day  
1374. Moderate smoker - 10-19 cigs/day  
1375. Heavy smoker - 20-39 cigs/day  
1376. Very heavy smoker - 40+ cigs/day

137C. Keeps trying to stop smoking  
137D. Admitted tobacco cons untrue?  
137G. Trying to give up smoking  
137H. Pipe smoker  
137J Cigar smoker  
137M Rolls own cigarettes  
137P. Cigarette smoker  
137Q. Smoking started  
137R. Current smoker  
137V Smoking reduced  
137X. Cigarette consumption  
137Y. Cigar consumption  
137Z. Tobacco consumption NOS  
137a. Pipe tobacco consumption  
137b. Ready to stop smoking  
137c. Thinking about stopping smoking  
137d. Not interested in stopping smoking  
137e. Smoking restarted  
137f. Reason for restarting smoking  
137g. Cigarette pack-years

Currently smoke and smoking status NOT recorded in the last 15 months

Never smoked (smoking status ever recorded)

Patients with LD (18+)

With a smoking SDA of never smoked with the following Read code, recorded ever:

1371. Never smoked tobacco

Ex-smokers and smoking status recorded in the last 15 months

Patients with LD (18+)

With a smoking SDA with one of the following ex-smoker codes recorded in the last 15 months:)

1377. Ex-trivial smoker (<1/day)

1378. Ex-light smoker (1-9/day)

1379. Ex-moderate smoker (10-19/day)

137A. Ex-heavy smoker (20-39/day)

137B. Ex-very heavy smoker (40+/day)

137F. Ex-smoker - amount unknown

- 137K. Stopped smoking
- 137L. Current non-smoker
- 137N. Ex pipe smoker
- 137O. Ex cigar smoker
- 137S. Ex smoker
- 137T. Date ceased smoking

Ex-smokers and smoking status NOT recorded in the last 15 months

Alcohol status recorded in the last 15 months

Patients with LD (18+)

With an Alcohol SDA with one of the following Read codes in the last 15 months:

136..% Alcohol consumption

Alcohol status NOT recorded in the last months

Exercise status recorded in the last 15 months

Patients with LD (18+)

Who have a record of exercise status (in the last 15 months) of one of the following Read codes:

138..% Exercise grading

Exercise status NOT recorded in the last 15 months

Diet status recorded in the last 15 months

Patients with LD (18+)

Who have a record of diet status with one of the following Read codes in the last 15 months:

13A..% Diet - patient initiated

Diet status NOT recorded in the last 15 months

## **LD and Referrals**

Adults (18+) on Learning Disabilities Register

With one of the following Read codes:

918e. On learning disability register

Eu81z [X]Developmental disorder of scholastic skills, unspecified

E3% Mental retardation

Eu7% [X]Mental retardation

Patients with LD (18+) referred to Audiologist

8H7V. Refer to audiologist

Patients with LD (18+) referred to Chiropodist/Podiatrist

8H7X. Refer to podiatry

8H7R. Refer to chiropodist

Patients with LD (18+) referred to Dentist

8H7F. Referred to dentist

Patients with LD (18+) referred to Mental Health Worker

8H7A. Refer to mental health worker

Patients with LD (18+) referred to Optician

8H7H. Refer to optician

Patients with LD (18+) referred to Psychiatry

8H49. Psychiatric referral

Patients with LD (18+) referred to stop smoking clinic

8HTK. Referral to stop-smoking clinic

Patients with LD (18+) referred to speech therapist

8H7G. Refer to speech therapist

Patients with LD (18+) referred to Social worker

8H75. Refer to social worker

Patients with LD (18+) referred to Psychologist

8H7T. Refer to psychologist

Patients with LD (18+) referred to District Nurse

8H72. Refer to district nurse

Patients with LD (18+) referred to Occupational Therapist

8H7J. Refer to occupational therap.

Patients with LD (18+) referred to CPN

8H7B. Refer to community psych. nurse

Patients with LD (18+) referred to LD team

8HHP. Referral to learning disability team  
Patients with LD (18+) referred to Dietician  
8H76. Refer to dietician  
Patients with LD (18+) referred to Physiotherapist  
8H77. Refer to physiotherapist  
Patients with LD (18+) referred to physical activity programme  
8H7s Referral to physical activity programme  
Patients with LD (18+) ever referred to Cardiology  
8H44. Cardiological referral  
Patients with LD (18+) ever referred to Gastroenterology  
8H48. Gastroenterology referral  
Patients with LD (18+) ever referred to Comm. Sexual Health Advisor  
8HHw. Refer to community sexual health advisor  
Patients with LD (18+) ever referred to ENT  
8H53. ENT referral

## **LD and Referrals in the last 15 months**

Adults (18+) on Learning Disabilities Register

With one of the following Read codes:

918e. On learning disability register  
Eu81z [X]Developmental disorder of scholastic skills, unspecified  
E3% Mental retardation  
Eu7% [X]Mental retardation

As previous section, with record in the last 15 months.

## **LD and Swallowing Difficulty**

Adults (18+) on Learning Disabilities Register

With one of the following swallowing difficulty Read codes:

R072. [D]Dysphagia  
1942. Difficulty swallowing solids  
1943. Difficulty swallowing liquids  
1944. Painful swallowing  
194Z. Swallowing symptom NOS

## **LD and Vision**

Adults (18+) on Learning Disabilities Register

With one of the following Read codes:

918e. On learning disability register

Eu81z [X]Developmental disorder of scholastic skills, unspecified

E3% Mental retardation

Eu7% [X]Mental retardation

With impaired Vision

1B7A. Patient concerned about eyesight

F48% Visual disturbances

With No visual symptom

1B71. No visual symptom

668A. Normal vision

Partially sighted or blind

6688. Registered partially sighted

6689. Registered blind

## **LD Diagnosis**

Adults (18+) on Learning Disabilities Register

With one of the following Read codes:

918e. On learning disability register

Eu81z [X]Developmental disorder of scholastic skills, unspecified

E3% Mental retardation

Eu7% [X]Mental retardation

With one of the following Read codes:

Patients (18+) with Down's Syndrome

PJ0z. Down's syndrome NOS

Patients (18+) with Asperger's syndrome

Eu845 [X]Asperger's syndrome

Patients (18+) with Prader-Willi syndrome

PKy93 Prader-Willi syndrome

Patients (18+) with Congenital Cerebral Palsy  
F23.. Congenital cerebral palsy

Patients (18+) with Cerebral Palsy, not congenital or infantile, acute  
G669. Cerebral palsy, not congenital or infantile, acute

Patients (18+) with Fragile X syndrome  
PJyy4 Fragile X syndrome

Patients (18+) with Phenylketonuria  
C301. Phenylketonuria

Patients (18+) with Angelman Syndrome  
PKyz5 Happy puppet syndrome  
PKyz5 11 Angelman syndrome

Patients (18+) with William Syndrome  
PKy4.00 William syndrome

Patients (18+) with Rett's Syndrome  
Eu842 [X]Rett's syndrome

Patients (18+) with Noonan's Syndrome  
PKy8000 Noonan's syndrome

Patients (18+) with Tuberous Sclerosis  
PK5.. Tuberous sclerosis

Patients (18+) with Neurofibromatosis NOS  
BBe1. [M]Neurofibromatosis NOS

Patients (18+) with Sturge-Weber Syndrome  
PK61. Sturge-Weber syndrome

Patients (18+) with Tay-Sach's disease  
F101300 Tay-Sach's disease

Patients (18+) with Hunters Syndrome  
C375211 Hunter's syndrome

## **LD Offered Health Education**

Adults (18+) on Learning Disabilities Register

With one of the following Read codes:

918e. On learning disability register

Eu81z [X]Developmental disorder of scholastic skills, unspecified

E3% Mental retardation

Eu7% [X]Mental retardation

Patients with LD (18+) offered Health Education re: Diet (last 15 months)

6799. Health ed. - diet

Patients with LD (18+) offered Health Education re: Exercise (last 15 months)

6798. Health ed. - exercise

Patients with LD (18+) offered Health Education re: Smoking (last 15 months)

6791. Health ed. - smoking

Patients with LD (18+) offered smoking cessation advice (last 15 months)

8CAL. Smoking cessation advice

Patients with LD (18+) offered Health Education re: Alcohol (last 15 months)

6792. Health ed. - alcohol

Patients with LD (18+) offered Health Education re: Sexual Health (last 15 months)

679K. Health education - sexual health

## **Severity of LD**

Adults (18+) on Learning Disabilities Register

With one of the following Read codes:

918e. On learning disability register

Eu81z [X]Developmental disorder of scholastic skills, unspecified

E3% Mental retardation

Eu7% [X]Mental retardation

Patients (18+) Learning Disability NOS

Eu81z% [X]Developmental disorder of scholastic skills, unspecified

Patients (18+) with Mild Mental Retardation

E30.. Mild mental retardation, IQ in range 50-70

Eu70.% [X]Mild mental retardation

Patients (18+) with Moderate Mental Retardation

E310.. Moderate mental retardation, IQ in range 35-49

Eu71.% [X]Moderate mental retardation

Patients (18+) with Severe Mental Retardation

E311.. Severe mental retardation, IQ in range 20-34

Eu72% [X]Severe mental retardation

Patients (18+) with Profound Mental Retardation

E312.. Profound mental retardation with IQ less than 20

Eu73.%  Profound mental retardation

Patients (18+) with Mental Retardation not specified

E3 Mental retardation

E3z.. Mental retardation NOS

E31z. Other specified mental retardation NOS

Eu7y.%  Other mental retardation

Eu7z.%  Unspecified mental retardation